


grandvalley.csc-dcc.ca

the Grand Valley Specifier

IN THIS ISSUE

- COVER STORY
2015 Christmas Luncheon
- Cathie's Chatter 2
- Chapter Executive..... 2
- Director's Report..... 3
- Single Source Spec Article .. 4
- 2016 Design Competition 5
- 2015 Xmas Lunch Photos 5
- 2015 Design Comp. Winner.. 6
- Current Event Info..... 7
- CSC Ski Day Info 8
- Feature Project..... 9
- Why Specify? 10
- The Places We've Been 10
- Ad & Pub Opportunities 11
- Conference Reg'n Form 14

UPCOMING CHAPTER EVENTS

- Lunch Seminar Jan 20/16
Dispute Resolution
- CSC Ski Day Feb 10/16
Alpine Ski Club, Collingwood
- Lunch Seminar Feb 17/16
Silo Systems for Mortar/Grout
- Lunch Seminar Apr 20/16
Fire Rated Alum Framing/Glazing
- Connections Café . May 19/16
@ The Pines from 5pm-8pm
- Golf Tourney..... Jun 15/16
Details TBA

CSC GVC CHRISTMAS LUNCHEON 2015 @ Old Marina Restaurant in Cambridge, ON

Always an incredible opportunity to get like-minded individuals together for some holiday cheer, CSC Grand Valley Chapter's Christmas Luncheon was again held at the Old Marina Restaurant on Puslinch Lake in Cambridge. The venue was full of character (see planes and trains below), the view was breathtaking, and the food was delicious, as always.

If you're looking for a social, engaging, fulfilling, and fun experiences with other professionals in our local construction industry, don't miss these fabulous events hosted by CSC's Grand Valley Chapter. We look forward to seeing you at the next one!!

(See Page 5 for more fun photos from this event!)



CSC Grand Valley Chapter

CSC (Construction Specifications Canada) is a national multi-disciplinary, non-profit association with chapters across Canada. CSC is committed to ongoing development and delivery of quality education programs, publications and services for the betterment of the construction community.

FOLLOW US:



GRAND VALLEY CHAPTER EXECUTIVE

Cathie Schneider, CTR

Stonequest Inc.

Chapter Chair

Colin Goheen, CTR

Battlefield Equipment

Chapter Director

Treasurer

Stefanie Hargest

Boehmers (Hargest Block Ltd)

Connections Café Chair

Paul Gerber

Archispectrual Consulting Corporation

Past Director

Sheri Thompson,

MMC International Architects Inc

Specification Officer

Architectural Officer

Carlos Alegre

Monteiro Masonry

e-Newsletter Editor

Engineering Officer

Communication Officer

David Boyle, CTR

W.R. Meadows

Website Editor

Chris Johnson, FCSC, RSW

Tri-SPEC Ltd.

Program Officer

Susan Cunha

Tri-Mechanical

Membership Officer

Marketing Officer

Douglas Pinnell

Mumby Insurance Brokers Inc.

Social Officer

We are looking for a few members to join the executive to help develop and maintain activities with construction related groups to advance the goals of CSC within our industry.



grandvalley.csc-dcc.ca

CATHIE'S CHATTER MESSAGE FROM THE SKI CHAIR

Welcome 2016! Happy New Year to one and all and Happy Birthday to all of you whose birthday falls on Feb. 29! Yep, it's a leap year.....

OK, so I'm not one to predict the future as I don't possess the gift. The best I can muster is to approach the future with optimism and an open mind. Here are my top ten CSC 'optimisms' for 2016.

1. Grand Valley CSC Membership will continue to grow. We are a vibrant and going concern not to mention, the recipient of the 2015 Lloyd Boddy Chapter of the Year award. Let's face it; I think people are drawn to and want to be where the party is?
2. On February 10th, 2016, the sun will shine, the snow will be plentiful and the temperature tolerable for our Grand Valley CSC Ski Day at Alpine Ski Club in Collingwood. Details can be found later in the e-newsletter.
3. Our luncheon seminars will be educational, informative, current, and timely while providing a wonderful opportunity to network with colleagues.
4. The National Conference in Halifax in May will allow me to be the best pirate I can be.
5. On June 15th, the grass will be green, the bugs at bay, laughter in the air and lady luck on my side for a hole in one. OK...so I would settle for closest to the pin.
6. Students from different post-secondary schools across Southern Ontario will embrace and engage in our 2016 CSC Student Design Competition to make it the best competition yet.
7. Our second annual Connections Café on May 19th will bring out more members from the local design community including, this year, the property developers taking over the rejuvenation of the Kitchener downtown core.
8. CSC is family. Each chapter across the country is a member of the family. It's been wonderful to see chapters really participating as a family. Providing the Design Competition handbook to the Alberta chapters was collusion at its best. My 'optimism' is that we will see more of this connectedness.
9. CSC is all inclusive. Reaching out to all of those that specify: Architects, Interior designers, Landscape Architects, Architectural Technologists and of course Spec Writers. Creating and encouraging these alliances will make us a stronger organization. After all, we are Construction Specifications Canada.
10. Finally, World Peace!

I wish this year to be one of growth, prosperity, caring, thoughtfulness, connectedness and inclusion.

Cheers,

Cathie Schneider, CTR

Chair, CSC Grand Valley Chapter

C: 519-572-5838



CSC Grand Valley Chapter

c/o Grand Valley Construction Association

25 Sheldon Drive, Cambridge, ON N1R 6M6

DIRECTOR'S REPORT

by Colin Goheen, Chapter Director



1. Chapter Executive:

As listed on page 2 of the Specifier

2. Financial:

- Our Chapter continues to be a positive cash flow position with the majority of our income coming from our monthly luncheon seminars.
- Our first Connections Café proved to be very profitable with excellent results.

3. Membership/Communications:

- Communication and Marketing are becoming stronger each month.
- Our e-newsletter was sent out a total of 4 times over the last 18 months.
- Our website is monitored and updated regularly.
- We have communicated with our members that we are now set-up with Karelo for ease of payment.
- Membership grew by 2 members as of September 2nd, totaling 45 members in our Chapter.

4. Professional Development/Education:

We hosted a total of 6 luncheon seminars between April 1, 2014 and March 31, 2015.

- **April 16, 2014** > Electronic Plans Room – Grand Valley Construction Association presented by Michael Murray of the GVCA. 15 attendees.
- **October 15, 2014** > The next generation of Access Control presented by Terry Fish, AHC-Assa Abloy. 12 attendees.
- **January 2015** > HVAC Seismic Design by Richard Levesque of HTS Engineering, 19 attendees.
- **February 2015** > Cross-laminated Timber Design & Construction by Raymond Ing of Nordic Engineered Wood Products, 14 attendees.
- **March 2015** > Working at Heights: Proposed Changes to OHSA Regulations by John Knekt of Battlefield Equipment Rentals, 10 attendees

5. Technical/Programs:

PCD course hosted by Grand Valley Chapter September 30, 2014 to December 9, 2014. 3 people completed the course.

6. Awards:

- Lloyd Boddy Chapter of the Year award received May 2015 at the Annual Conference in Winnipeg.

7. Chapter Marketing Strategy:

- Following the recommendations of our Program Officer, we increased the percentage of luncheon seminar topics (30%) that target “underserved” members, specifically engineers and contractors with a increase in attendance including new members and inactive members from those sectors: HVAC Seismic Design for non-structural members
- Continued to build relationships with SW Ontario Design School faculty and Students with regular correspondence and site based activities related to the Students Design Competition. Furthered communications and visibility with local government and community based organizations to demonstrate understanding of collaborative city building and commitment to corporate social responsibility, a growing theme in both public and private sector infrastructure bid documents and pre-qualification statements.
- Increased visibility in the online community of CSC-GV activities using various social media channels.

Example: wordpress, grandsocial & Google+

- Strengthened member relationships by having fun: Golf Tournament! Connections Café!
- Built capacity to align CSC Corporate Sponsors & Affiliates with the community goodwill generated by Chapter initiatives through participation in the inaugural Connections Café event. Positive feedback from participants and sponsors suggest a desire to continue local informal networking events in a setting that brings together a variety of construction industry stakeholders (design professionals, contractors, students, manufacturers, real estate developers, government, etc.). The committee chose a lovely setting with good food and music without trade booths and with minimal yet tasteful sponsor branding: Connections Café Slideshow
- Promoted chapter events hosted by neighbours Toronto, Hamilton-Niagara, London & Ottawa to our membership and, while attending such event whenever possible, were able to raise awareness of Grand Valley programming, provide updates on the Design Competition and promote social events to the broader membership. Our social officer brings new energy to Grand Valley and we look forward providing more opportunities to strengthen member relationships with fun and informal events
- Promotion of Grand Valley activities continued right to the National Conference, where news of the success of the Student Design Competition had inspired CSC friends from across the country to form committees and start a competition in their own Provinces. To that end, a compiled set of template documents and recommendations based on the Design Committee's experience has been prepared to share with the National membership.

8. Nominations:

- Chapter Executive and officers are stated in Section 1.
- Elections were held at our June Executive meeting.

9. Liaison:

The Chapter has liaised with the following groups:

Grand Valley Construction Association – they continue to allow us to use their facilities for our monthly luncheon seminars and executive meetings. Through their generosity of not charging us for the facilities we have been able to strengthen our financial position. In addition used the GVCA for our PCD course.

ARIDO – Karen Wilson continues to promote CSC locally to their members. We continue to see ARIDO member participation at monthly luncheon meetings, depending on the subject.

Grand Valley Society of Architects – we continue to reach out to the GVSA members for our various social events and seminars. Attendance varies depending on the topic.

Universities & Colleges – through the Design Competition we are strengthening our relationships.

10. Other Activities:

- Annual Golf Tournament was held June 17th. 22 attendees. A very successful event.
- The 2015 Design Competition was overwhelmingly successful. The response from the participating Colleges and Universities was beyond our expectations. The 2016 Design Competition is exciting and will focus on the design of an open office concept for the High Tech Industry. The building is located at 8 Queen St N in Kitchener owned by Voisin Capital. Voisin is supportive and enthusiastic about the competition, which will run parallel to the actual transformation of the building for the new tenant, Vidyard.

Respectfully submitted,
Colin R. Goheen, CTR
Director, CSC Grand Valley Chapter



grandvalley.csc-dcc.ca

CSC Grand Valley Chapter

c/o Grand Valley Construction Association
25 Sheldon Drive, Cambridge, ON N1R 6M6

SINGLE SOURCE RESPONSIBILITY

Written by David A. Stutzman, CSC, AIA, CSI, CCS, SCIP, LEED AP
Founding Principal of Conceptus Inc., Tuckahoe, NJ

<http://conceptusinc.com/swblog/2015/08/single-source-responsibility/>

Construction specifications define work results. The results are divided among Divisions and Sections according to CSI's MasterFormat, the industry's organizational standard. Complying with MasterFormat allows specification readers to find information quickly, efficiently.

The organization does not attempt to assign work results to specific trades or subcontractors. Those assignments are the general contractor (GC) or construction manager's (CM) responsibility, unless the specifications explicitly make the assignment. Simply combining work results within a single section is not sufficient.

Specialty design consultants tend to write a single specification section to describe all work results under their control. This is evident in Section 114000 – Food Service Equipment where tables, sinks, carts, shelving, fixed equipment, portable equipment, hoods, and even walk-in refrigerators are specified in this single section. Fortunately, perhaps, a single trade contractor is normally responsible for everything included in this section. No so for others.

Consider building envelopes. Curtain wall, windows, entrance doors, glass, air barrier, sheathing, framing and cladding are typically specified in individual sections as separate work results. However when an envelope consultant is engaged to assist the architect, the consultant may write the specification with some or all these work results combined into a single specification section. Often the presumption is that all will be provided by a single trade contractor as for food service.

Unlike food service, multiple trades are required to assemble the building envelope. The GC or CM may choose to divide the work so skilled subcontractors can be engaged for each work result and to improve productivity to the overall project's benefit.

The specifications can dictate a single source responsibility. It does not matter if the work results are included in a single specification section or not. In some cases, it may be more beneficial to rely on specifications for individual work results, referenced from another section that describes the entire assembly. This method allows the overall system performance to be specified once and provides a place to specify the intersections and transitions among the various products and materials.

Within individual specifications, single source responsibility can be stated:

"Perform Work of this Section and Sections [], [], and [] by single entity."

This requirement must be repeated in every affected section to ensure the single point of responsibility is established. The optimum place to specify this requirement is in the Part 1 Quality Requirements article, the same location where manufacturer, fabricator, and installer qualifications are specified. Additionally, qualifications can be specified for the single entity, too, by reliance on Division 01 or by listing qualification details within the individual sections.

"Systems Integrator: Qualified entity regularly engaged as single, responsible source providing Work of this Section and Sections [], [], and []."

When using a single specification section, the text suggested above needs only minor modification.

"Perform Work of this Section by single entity."

"Systems Integrator: Qualified entity regularly engaged as single, responsible source providing Work of this Section."

If single source responsibility is required to ensure overall coordination and ultimate quality, the specifications must explicitly state the requirement. Otherwise the GC or CM may and will choose how the work is divided, to best suit their own needs.

About the Author

David has over 38 years of experience in the construction industry as an architect and specifier focusing on construction specifications and quality assurance reviews for architectural, engineering, and process industry projects. Conceptus Inc. is one of the largest independent Specifications consulting firms in the United States. David is actively involved in the Construction Specifications Institute at chapter, regional, and national levels having served on and chaired committees responsible for the current CSI formats. David also joined CSC this spring and is a Grand Valley Chapter member.



grandvalley.csc-dcc.ca

CSC Grand Valley Chapter

c/o Grand Valley Construction Association
25 Sheldon Drive, Cambridge, ON N1R 6M6

CHRISTMAS LUNCHEON PHOTOS



GVC bringing home the hardware!!
Lloyd Boddy Chapter of the Year Award



"So I asked her, 'Do you love me?' and she said, 'No! But that's a really nice ski mask.'"



"Wanna hear a construction joke?
Sorry, I'm still working on it."



Socializing, Networking, and LUNCH?!
Well worth the price of admission!

2016 CSC STUDENT DESIGN COMPETITION

This year's **CSC Student Design Competition** is spectacular for so many reasons. It is relevant and current, embracing a direction for the Kitchener downtown core and inviting students to share in the vision.

Post-Secondary Design Schools in Southern Ontario have been approached. Ryerson School of Interior Design and the Conestoga College Interior Design Program have already incorporated the competition into their curriculum and we hope to see more schools step up to the challenge. **So exciting!**

I want to give a shout out to the Toronto CSC Chapter who has again agreed to partner with us to make this year's competition a success. Their support and encouragement through the years has, and continues to be, greatly appreciated. Team work at it best....

**Competition Basic Details:**

Location: 8 Queen St. N. Kitchener
Owners: Voisin Capital and Brick by Brick Developments
New Tenants: Vidyard

Focus: Open Office concept for the High Tech industry and/or cluster businesses that support the high tech industry in the Kitchener downtown core.

Prize: 1st place \$2000.00, 2nd place \$1000.00, 3rd place \$500.00 + EXPOSURE.

Parameters: Must include 5 of the 10 selected product categories into their design. Must include one specification based on their selected product. See website for complete details:

<http://www.cscdesigncompetition.com>.

Background:

Downtown Kitchener is currently recreating itself from the industrial city of the past to one critically focused on the high tech industry. Google had a very small presence in the downtown core but in 2014 they signed a lease for 185,000 sf in an old building called the Breithaupt Block destined to be renovated. As I write this article today, January 14, Prime Minister Justin Trudeau is visiting Kitchener to officially open the new Google building.

It will be key for students to understand and research the new demographic coming to downtown; the young professional who can be found working 80 hours a week to meet a deadline. Not a suit and tie culture. They are well paid, typically don't cook, keep unconventional hours, prefer to walk, bike or use public transit to work and otherwise avoid a suburban lifestyle. This competition will encourage the students to be truly creative and contribute to a new take on "community".

We are delighted to have partnered with Voisin Capital, the new owners of the building. Frank and Steve Voisin are committed to adding to the positive changes in the downtown core and have totally embraced the competition. They get it! They understand the potential that businesses and the design/construction community have to engage the young design professional coming out of school.

Construction has already begun at 8 Queen St to accommodate new tenant, Vidyard, a rapidly growing start-up focused on video marketing and analytics. What a tremendous opportunity to have the competition parallel real life. A true learning experience!

So exciting! Oh yeah, I've already said that....



grandvalley.csc-dcc.ca

CSC Grand Valley Chapter

c/o Grand Valley Construction Association
25 Sheldon Drive, Cambridge, ON N1R 6M6

2015 WINNERS—SOUNDWAVE VIRTUAL VS. ACTUAL



CONCEPTUAL FRONT OF BUILDING



RECENT PHOTO OF ACTUAL FHM

Chapeaux et Champagne A Fundraising Fashion Show & Exhibition

Saturday, February 13, 2016

Doors open: 3 pm
Fashion show starts: 4 pm

Fashion History Museum,
74 Queen Street East,
Cambridge, Ontario



Featuring a century of hats from the founder's collection, and contemporary milliner Lori Lavers.

One day exhibition of historic garments by Haute Couturier Jeanne Lanvin from the vaults of the Fashion History Museum.

A glass of champagne will be served with a selection of canapés.



Tickets: \$45.00, available through Eventbrite at www.eventbrite.ca



grandvalley.csc-dcc.ca

2015 CSC Student Design Competition Winning Entry by SOUNDWAVE



WINNING CONCEPTUAL DESIGN OF THE REAR OF THE HESPELER POST OFFICE
SOUNDWAVE: ARTEMIS H., JENIFER S., & YINGFENG Z. from RYERSON UNIVERSITY



WINNING ENTRANT—SOUNDWAVE
WITH PAUL GERBER AND DAVE BOYLE

WINNING ENTRANT—SOUNDWAVE
RECEIVING CERTIFICATES AND AWARD



WINNING ENTRANT—SOUNDWAVE
WITH THEIR DESIGN BOARD

COMPETITION FINALISTS

CSC's Grand Valley Chapter would like to send our sincerest appreciation to the Fashion History Museum (FHM) for the opportunity to showcase the Hespeler Post Office and for allowing the competitors to tour the facility, resulting in a number of high quality, thorough, creative, and thoughtful design submissions. Congratulations to FHM for opening up their doors in Hespeler and we wish them all the success at their upcoming event (details on the left) and all future events and operation.

CSC Grand Valley Chapter

c/o Grand Valley Construction Association
25 Sheldon Drive, Cambridge, ON N1R 6M6

STAYING CURRENT!! with KARELO.COM ONLINE REGISTRATION SERVICE

CSC Grand Valley Chapter is committed to growth and improvement of our member experience. Keeping with the times allows us to streamline our operation and we trust that using Karelo's online registration service will help us accomplish our goals.

To learn more about Karelo, visit www.karelo.com.

And DON'T FORGET TO REGISTER FOR THIS MONTH'S SEMINAR!!

(SEE LINK ON THE RIGHT)



grandvalley.csc-dcc.ca

Meeting Notice - Lunch Seminar Silo Systems for Masonry Mortar and Grout With Guest Speaker Mr. Tim Ruf, Maxi-Mix Inc.

Mr. Tim Ruf is the General Manager for Maxi-Mix, Inc., a Milton-based supplier of bulk silos and pre-mixed bags for masonry mortar and grout. Mr. Ruf has over 29 years of experience in the masonry industry. He particularly specializes in the field of masonry mortars and grouts, and is a member of the Canadian Standards Association's committee responsible for maintaining and updating the CSA A179 - Mortar and Grout for Unit Masonry standard. He is also a member of the Ontario / Canadian Masonry Contractors Association and the Masonry Contractors Association of Toronto.

Mr. Ruf's presentation will focus on the design- and construction-benefits of using silo systems for the production of masonry mortar and grout on building projects. It will include consideration of the following:

- Mortar - What is it?
- What purpose does mortar play in a wall's construction?
- What are the important physical properties to consider when selecting a mortar?
- What are the mortar Types, and how are their designations derived?
- What issues of quality control need to be considered?
- CSA A179-14: What key changes were made in the recently released 2014 edition?
- Efflorescence - what are its causes and how can it be prevented?
- Masonry Grout - understanding on-site testing.
- LEED and the 'Greener' solution.

Those who should consider attending include: Masonry Contractors, General Contractors, Structural Engineers, Architects, and Technologists involved with the construction of buildings.

When: February 17, 2016
Time: 11:30 Sharp
Where: Grand Valley Constr'n Assoc'n
25 Sheldon Dr, Cambridge

\$20 Members
\$25 Non-Members
\$10 Students



<http://www.karelo.com/register.php?BID=611&BT=10&Ev=16062>

**Please register and make your payment through Karelo
no later than February 15, 2016**

The newsletter acts as a moderator without approving, disapproving or guaranteeing the validity or accuracy of any data, claim or opinion appearing under a byline or obtained or quoted from an acknowledged source. The opinions expressed by the authors do not necessarily reflect the official views of Construction Specifications Canada. Also, appearance of advertisements and new product or service information does not constitute an endorsement of product or services featured.

CSC Grand Valley Chapter

c/o Grand Valley Construction Association
25 Sheldon Drive, Cambridge, ON N1R 6M6

CSC Ski Day – “Dare to Wear Retro”

If you still have a favourite ski outfit from year's past hanging in the closet, here's your opportunity to “blow off the cobwebs”. Get out your onesies, Varnets or ribbed ski pants and join us for a fun filled day on the slopes. If you have purged the old togs, just come as you are. After all, it's really about the carve and connecting with colleagues!

When: Wednesday, February 10, 2016

Place: Alpine Ski Club, Collingwood, ON

www.alpineskiclub.com

Equipment rental information: <http://alpineskiclub.com/d/5/alpine/6553>

Price: \$125.00

Includes:

- Lift ticket, including the Steeps Chair
- Beginner and Intermediate Group lessons (ski and snowboard)
- Access to the Terrain Park and Half Pipe with a Terrain Park Pass
- Duo Slalom Fun Race (Match to Win)
- Continental Breakfast
- Après Ski Hors d'oeuvres catered by “Men with Knives”
- General Snowshoeing or a guided Snowshoe Tour
- Outdoor skating (temperatures permitting)
- Easy advance equipment rental system with concierge service upon arrival

Register on-line: <http://www.karelo.com/register.php?BID=611&BT=10&Ev=15889>



ALPINE



grandvalley.csc-dcc.ca

CSC Grand Valley Chapter

c/o Grand Valley Construction Association
25 Sheldon Drive, Cambridge, ON N1R 6M6

THIS COULD BE YOUR FEATURED PROJECT
CONTACT CARLOS ALEGRE FROM THE CSC GRAND VALLEY CHAPTER EXECUTIVE
TO FIND OUT MORE ABOUT HAVING YOUR PROJECT FEATURED IN OUR E-NEWSLETTER!
cscgrandvalley@gmail.com

THIS COULD BE YOUR FEATURED PROJECT
 CONTACT CARLOS ALEGRE FROM THE CSC GRAND VALLEY CHAPTER EXECUTIVE
 TO FIND OUT MORE ABOUT HAVING YOUR PROJECT FEATURED IN OUR E-NEWSLETTER!
cscgrandvalley@gmail.com



ST. JOHN'S-KILMARNOCK SCHOOL



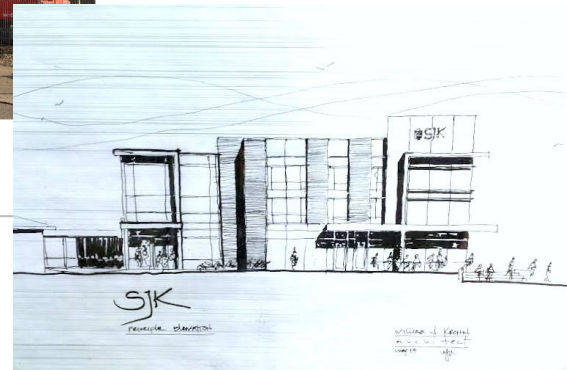
St. John's Kilmarnock School

This project is a 5 million dollar capital campaign to build a Learning Commons and Multipurpose/Dining Hall. The two-storey 18,000 square foot facility will include an innovative open-concept library commons, collaborative learning spaces, art exhibition area, a multimedia centre, a roof top garden, dining area for up to 325 which also allows for an auditorium-type space for 450.

WILLIAM J. KROHN

a r c h i t e c t

Project Duration: December 2014 - Winter 2016
 Size: 18,000 sq.ft; 2-Storey
 Project Cost: Approximately \$5 Million



grandvalley.csc-dcc.ca

CSC Grand Valley Chapter

c/o Grand Valley Construction Association
 25 Sheldon Drive, Cambridge, ON N1R 6M6

OH, THE PLACES WE HAVE BEEN!



Dave Boyle in Panama, catching rays while staying current with the happenings back home

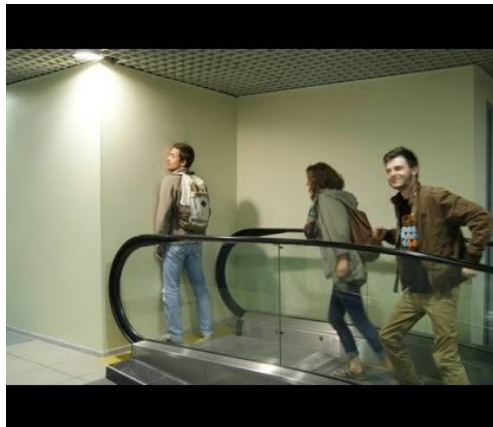


Douglas Pinnell in Costa Rica, scoping out a potential new satellite chapter location

**YOUR PORTRAIT
BUSINESS CARD
ADVERTISEMENT
HERE!**

WHY SPECIFY?

**CSC GRAND VALLEY CHAPTER ILLUSTRATES
THE IMPORTANCE OF SPECIFICATIONS**



**THIS COULD BE YOUR
HALF-PAGE
ADVERTISEMENT**



grandvalley.csc-dcc.ca

CSC Grand Valley Chapter

c/o Grand Valley Construction Association
25 Sheldon Drive, Cambridge, ON N1R 6M6

**YOUR BUSINESS
CARD
ADVERTISEMENT
HERE!**

**YOUR BUSINESS
CARD
ADVERTISEMENT
HERE!**

**THIS COULD BE YOUR
QUARTER-PAGE
ADVERTISEMENT**



grandvalley.csc-dcc.ca

ADVERTISING AND SPONSORSHIP OPPORTUNITIES

BE SEEN! Advertise in the Grand Valley Specifier!

Business Card sized ad space is available for a rolling 1 year period (4 issues per year) and 1/4 and 1/2 page ads are available on an issue-by-issue basis. Advertising costs are as follows:

Ad Size	Orientation	Member Price	Non-Member Price
3-1/2" x 2" Business Card (4 issues)	Landscape /Portrait	\$60	\$100
5" x 3-1/2" Quarter Page (1 issue)	Landscape Only	\$35	\$50
5" x 7" Half Page (1 issue)	Portrait Only	\$50	\$75

For more information, contact us by email to cscgrandvalley@gmail.com

ARTICLES AND PUBLISHING OPPORTUNITIES

BE HEARD! Publish your idea in the Grand Valley Specifier!

Share your knowledge with your peers while gaining recognition for your contribution to the betterment of the construction profession in your community.

We would love to hear from you if you are interested in publishing any technical articles, upcoming events, or announcements in the Grand Valley Specifier. Ideas are also always welcome.

Send your information electronically by email to cscgrandvalley@gmail.com



Building on History

2016

**CONFERENCE
HALIFAX • NS**

May 25 – 29, 2016

**Registration Form is at the back of this newsletter.
REGISTER TODAY!!!**

CSC Grand Valley Chapter

c/o Grand Valley Construction Association
25 Sheldon Drive, Cambridge, ON N1R 6M6



Construction Products Representatives
www.buildingresource.ca

Michael Pace, C.E.T., BSSO
michael@buildingresource.ca

Joseph Amodeo, MBA, P.Eng.
joseph@buildingresource.ca

Maureen Ballentine
maureen@buildingresource.ca



Breathable wall & roof membranes
www.srpcanada.ca

Tel/Fax: 416 410 4055

DELTA

DELTA® protects property. Saves energy. Creates comfort.

David DeMaria

Regional Sales Manager - Ontario
Territory Sales Manager - Upstate New York

Cell: (905) 818-5644

Cosella-Dorken Products, Inc.
4655 Delta Way, Beamsville
ON, Canada L0R 1B4
(905) 563-3255, Ext: 340
Fax: (905) 563-5582
1-888-4DELTA4 (433-5824)
ddemarie@cosella-dorken.com
www.cosella-dorken.com

COSELLA DORKEN

DAVID BOYLE, CTR

W. R. MEADOWS OF CANADA
70 HANNANT COURT, MILTON, ONTARIO L9T 5C1



BUS: (905) 878-4122
FAX: (905) 878-4125
CELL: (416) 419-0144
TOLL FREE: (800) 563-3618
dboyle@wrmeadows.com

www.wrmeadows.com



TRI • SPEC LTD.
the Construction Specification Experts

CHRIS JOHNSON, FCSC, RSW, MAATO, CCS
REGISTERED SPECIFICATION WRITER

73 WATER STREET NORTH, SUITE 505, CAMBRIDGE, ON N1R 7L6
TEL.: 519-920-SPEC WEB SITE: WWW.TRISPECLTD.COM
FAX: 519-622-5771 E-MAIL: CSJOHNSON@TRISPECLTD.COM

THE BEST one-day show in the building construction industry!



educate • communicate • collaborate

you cannot afford to miss this show!

Thursday, March 3, 2016

TRADESHOW LOCATION

METRO TORONTO CONVENTION CENTRE
CONSTITUTION HALL, NORTH BUILDING
255 Front Street West, Lower Level, Room 105

1:15 pm to 6:00 pm

REGISTER NOW THROUGH KARELO:

<http://www.karelo.com/register.php?BID=469&BT=10&Ev=15638>

**YOUR BUSINESS CARD
ADVERTISEMENT
HERE!**

**YOUR BUSINESS CARD
ADVERTISEMENT
HERE!**



grandvalley.csc-dcc.ca

CSC Grand Valley Chapter

c/o Grand Valley Construction Association
25 Sheldon Drive, Cambridge, ON N1R 6M6



Building on History

2016

**CONFERENCE
HALIFAX • NS**

May 25 – 29, 2016

HALIFAX

Founded in 1749, Halifax steeped in history also known as "the Gateway to Canada" will be hosting CSC Conference 2016.

The CSC Atlantic Chapter promises a technical program that will be informative, educational and enlightening for those in the Design, Building and Supply teams.

As always there will be ample opportunities to network with others in the industry and be introduced to our valued sponsors' latest products and services.

The CSC Atlantic Chapter invites you to join them and experience the maritime charm and create your own bit of history.



www.csc-dcc.ca



Building on History

2016

CONFERENCE
HALIFAX • NS

May 25 – 29, 2016

CSC CONFERENCE REGISTRATION / Marriott Halifax Harbourfront Hotel

First Name: _____ Last Name: _____

Title: _____ Organization: _____

Address: _____

City: _____ Province/State: _____ Postal Code/Zip: _____

Telephone: _____ Fax: _____ E-mail: _____

Name for Badge (please print): _____ Chapter: _____

Full Name of Companion (if registering): _____ Companion E-mail: _____

Are you a CSC or CSI Member? ☐ YES ☐ NOIs this your first CSC conference? ☐ YES ☐ NO**REGISTRATION FEES** All fees are in Canadian Dollars**PAYMENT****Full Conference** registration fees include all technical sessions, scheduled luncheons/breakfasts, Fun Night and Presidents Ball

Delegate registration fee: \$ _____

** Companion Registration fee \$ _____

Additional Tickets \$ _____

Companion Fees include all scheduled luncheons/breakfasts listed on Companion schedule, tours/transportation, Fun Night and President's Ball

	UNTIL APRIL 15	AFTER APRIL 15	AFTER MAY 18 (subject to availability)
Members (full Conference)	\$ 495.00	\$ 570.00	\$ 650.00
Members (Single day)	\$ 250.00	\$ 300.00	\$ 375.00
Indicate day: <input type="checkbox"/> Thursday <input type="checkbox"/> Friday			

Sub Total: \$ _____

HST (15%) (R10697097) \$ _____

TOTAL AMOUNT \$ _____

Non-Member (full Conference)	\$ 600.00	\$ 670.00	\$ 750.00
Non-Member (Single day)	\$ 300.00	\$ 350.00	\$ 400.00
Indicate day: <input type="checkbox"/> Thursday <input type="checkbox"/> Friday			

PAYMENT METHOD

* Student (full Conference)	\$ 250.00	\$ 295.00	\$ 395.00
* Student (Single day)	\$ 40.00	\$ 50.00	\$ 75.00
Indicate day: <input type="checkbox"/> Thursday <input type="checkbox"/> Friday			

☐ Cheque (Payable to CSC) # _____☐ Visa ☐ MasterCard ☐ American Express

** Companion	\$ 425.00	\$ 470.00	\$ 595.00
Additional Companion	\$ 495.00	\$ 570.00	\$ 650.00

Card Number: _____

Expiry Date: _____ Security code _____

Date: _____

Signature: _____

► Single day registrations include technical sessions & scheduled lunch only.

ADDITIONAL TICKETS

Full conference and companion registrations include one of each of the following, order additional tickets ONLY for guests

FUN NIGHT \$150.00 PRESIDENT'S BALL \$ 95.00

of tickets required: _____ # of tickets required: _____

IMPORTANT:

Please send payment with registration form. All registered delegates Will receive confirmation of their registrations via fax/e-mail, or post. Cancellations must be in writing and a \$100 cancellation fee will be charged. All registrations are non-refundable/non-transferable 2 weeks prior to the start of the Conference.

Registered "Delegates" will not be permitted on the Companions program.

* Student - is an individual undergoing training in a school of architecture, engineering, or technology- Photo ID is required at the registration desk - space is limited and must be registered prior to the conference

** One Companion for every Delegate registration; each additional Companion will be at Delegate rate.